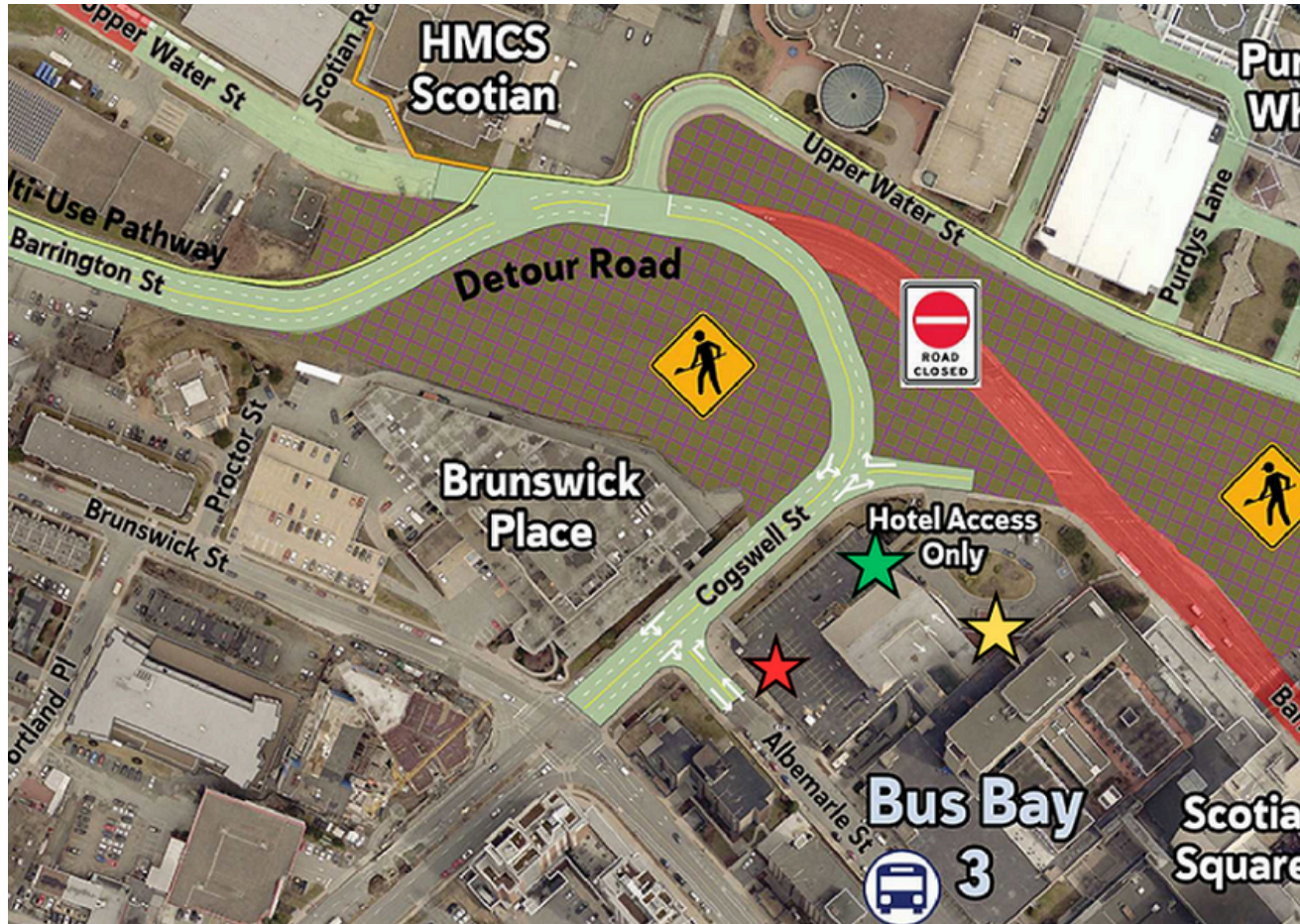


Accessing the Hotel

Starting from June 17 until mid December 2024, accessing the hotel's main driveway will be adjusted due to ongoing construction at the Cogswell Interchange. If you are traveling along Barrington Street, particularly from the MacKay or MacDonald bridges, a paved detour road will take you past what previously was Barrington Street, and shortly after, you will be able to make a left into the hotel's new driveway.



These alternative routes are recommended during rush hour periods (8AM to 10AM and 3:30PM to 5:30PM) when traffic congestion on Barrington Street detour may make it difficult to access the hotel's main driveway via the usual route:

From the MacKay Bridge:

Follow Robie Street to Cogswell Street (at the Halifax Common) and turn left onto Cogswell, which will bring you to the hotel.

From the MacDonald Bridge:

Turn left on Gottingen and follow to Cogswell Street, make a left, and you will immediately come to the hotel driveway.

Parking

Vehicles Under 179CM / 5 Feet, 11 Inches

The closest parking facility is the Scotia Square Parkade. Guests with vehicles under 180 cm (5 feet, 11 inches) in height can access the parkade directly from the hotel's driveway (indicated by a green star on the map). Please note that this parkade is independently owned and operated, however is the preferred location for guests due to its close proximity to the hotel.

Upon entry to the parkade, guests are required to take a ticket to activate the gate. Parking fees are structured on an hourly basis at \$4.50 per hour, with a maximum daily charge of \$26 plus HST Monday through Thursday, and \$24 plus HST Friday through Sunday. For added convenience, guests may present their parking ticket at the front desk for validation at the same daily rates, which allows for unlimited access within a 24-hour period. Please note that validation for unlimited access must be processed exclusively at the front desk; otherwise, standard hourly or daily rates will apply upon each entry and exit at the parking gates.

The parkade has two towers with the driveway entrance being the North Tower. Should you go up a ramp into the South Tower, simply go up another ramp to return to the North Tower. Take the parkade elevators to level G to access the lobby.



Vehicles Over 180CM / 6 Feet

An oversize entrance is available at 5201 Albermarle Street (Red Star on Map, P3 section). The oversize portion is only at this entrance and section; **all other areas of the parkade cannot accommodate oversize vehicles**. Take the parkade elevators to level G to access the lobby.

Upon entry to the parkade, guests are required to take a ticket to activate the gate. Parking fees are structured on an hourly basis at \$4.50 per hour, with a maximum daily charge of \$26 plus HST Monday through Thursday, and \$24 plus HST Friday through Sunday. For added convenience, guests may present their parking ticket at the front desk for validation at the same daily rates, which allows for unlimited access within a 24-hour period. Please note that validation for unlimited access must be processed exclusively at the front desk; otherwise, standard hourly or daily rates will apply upon each entry and exit at the parking gates.